

WHICH CITIES AND COUNTIES IN FLORIDA HAVE THE MOST CAR ACCIDENTS

How safe are the roads in your city? If you live in the Miami, Tampa, Orlando or Jacksonville area, read on to find out how many car crashes, auto accident injuries and crash-related deaths occurred in your community in 2018.

K&P Kanner & Pinaluga
ACCIDENT ATTORNEYS

MIAMI-DADE COUNTY

63,034 Car Crashes

30,562 Accident Injuries

299 Accident Fatalities

It's no surprise that the largest county in Florida also has the most accidents. The Miami-Fort Lauderdale-West Palm Beach metro area is the largest in the state with more than 6 million people. Roughly 2.8 million of those residents live in Miami-Dade County, which makes up the southern part of the metro area.

K&P Kanner & Pinaluga
ACCIDENT ATTORNEYS





BROWARD COUNTY

40,560 Car Crashes

24,329 Accident Injuries

202 Accident Fatalities

Broward County, just north of neighboring Miami-Dade, is home to about two million residents and is more densely populated than its southern neighbor. It's rate of accidents is comparable to those found in Miami-Dade County.

K&P Kanner & Pinaluga
ACCIDENT ATTORNEYS

PALM BEACH COUNTY

26,959 Car Crashes

16,051 Accident Injuries

184 Accident Fatalities

With nearly 1.5 million people, Palm Beach County, the northern half of the Miami-Fort Lauderdale-West Palm Beach metro area, has its fair share of accidents. Although Palm Beach County had fewer accidents overall than Broward County, it had nearly as many accident fatalities.

K&P Kanner & Pinaluga
ACCIDENT ATTORNEYS





HILLSBOROUGH COUNTY

29,037 Car Accidents

20,112 Accident Injuries

182 Accident Fatalities

As part of the Tampa–St. Petersburg–Clearwater metro area, Hillsborough is the fourth most populous county in the state with 1,436,888 residents. Interestingly it is only about 50,000 residents smaller than Palm Beach County but has nearly 4,000 more accident injuries and nearly 2,000 more crashes overall. From a motorist perspective, driving around the Tampa metro area is a bit riskier than Palm Beach.

K&P Kanner & Pinaluga
ACCIDENT ATTORNEYS

PINELLAS COUNTY

17,874 Car Crashes

10,754 Accident Injuries

121 Accident Fatalities

The other half of the Tampa-St. Petersburg-Clearwater metro area, Pinellas County was home to 975,280 Floridians at the time of the last census in 2017. It only has about two thirds the population of its neighboring Hillsborough county and roughly half the number of car crashes and accident injuries.

K&P Kanner & Pinaluga
ACCIDENT ATTORNEYS





ORANGE COUNTY

31,916 Car Crashes

22,989 Accident Injuries

185 Accident Fatalities

Orange County, the largest county in the Orlando-Kissimmee-Sanford metro area, is home to almost 1.4 million Floridians. The county has a higher rate of crashes by population than Hillsborough and Pinellas Counties in the Tampa metro area.

K&P **Kanner & Pinaluga**
ACCIDENT ATTORNEYS

DUVAL COUNTY

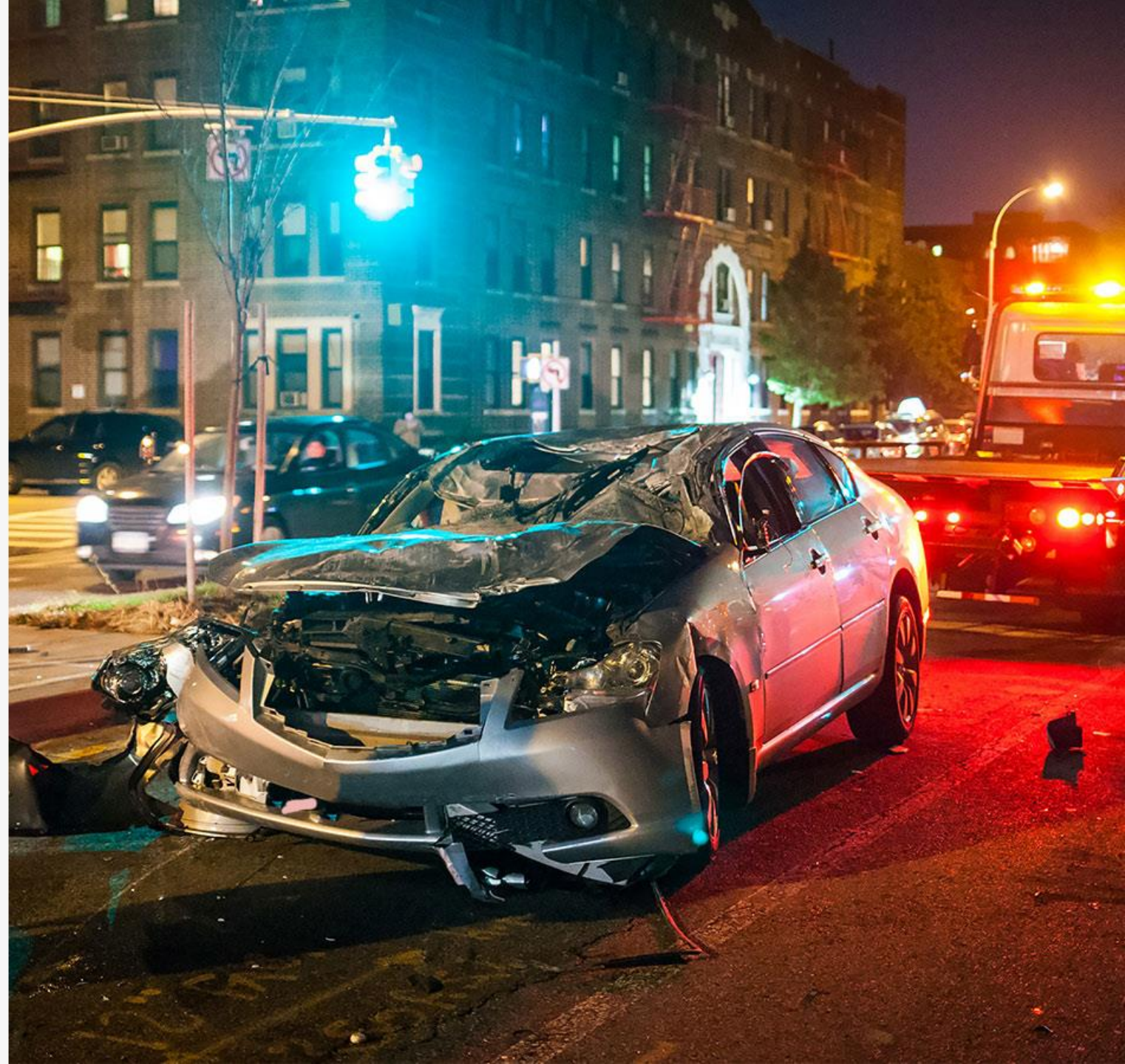
24,212 Car Crashes

13,852 Accident Injuries

139 Accident Fatalities

Although Jacksonville isn't the largest metro area in Florida, it is the largest single city with more than 900,000 residents. It's also the seat of Duval County, which numbers roughly 950,181 Floridians in total. Although similar in population to Pinellas County, Duval's residents got into roughly 6,000 more accidents in 2018.

K&P Kanner & Pinaluga
ACCIDENT ATTORNEYS





FLORIDA STATEWIDE ACCIDENT STATS FOR 2018

402,592 Car Crashes
254,873 Accident Injuries
3,174 Accident Fatalities

Florida suffers 14.7 auto accident deaths per 100,000 residents and 1.41 deaths per 100 million vehicle miles travelled. Florida's accident and injury rates by population unfortunately makes it one of the most dangerous states in which to be a motorist.

K&P Kanner & Pinaluga
ACCIDENT ATTORNEYS

SOURCES

<https://www.flhsmv.gov/traffic-crash-reports/crash-dashboard/>
https://www.florida-demographics.com/counties_by_population
https://www.florida-demographics.com/cities_by_population

K&P Kanner & Pintaluga
ACCIDENT ATTORNEYS